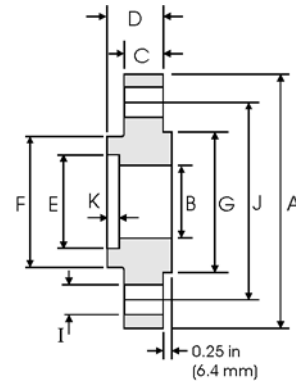


Socket Welding Flanges - ANSI B16.5



Class 600 lb

| Pipe | | Flange | | | | | | Hub | Raised Face | Drilling Data | | | Weight |
|-------------------|------------------|------------------|----------------------------------|----------------------|----------------|-----------------|-----------------|--------------|---------------|---------------|--------------------|-----------------------------|-----------|
| Nominal Pipe Size | | A | B | C | D | E | K | F | G | H | I | J | |
| | Outside Diameter | Overall Diameter | Inside Diameter | Flange Thickness min | Overall Length | Socket Diameter | Depth of Socket | Hub Diameter | Face Diameter | No. of Holes | Bolt Hole Diameter | Diameter of Circle of Holes | kg/ piece |
| | in mm | in mm | in mm | in mm | in mm | in mm | in mm | in mm | in mm | | in mm | in mm | |
| 1/2 | 0.840 | 3.750 | To be specified by the Purchaser | 0.560 | 0.880 | 0.880 | 0.380 | 1.500 | 1.380 | 4 | 0.620 | 2.620 | 0.76 |
| | 21.30 | 95.20 | | 14.20 | 22.30 | 22.40 | 9.600 | 38.10 | 35.10 | | 15.70 | 66.55 | |
| 3/4 | 1.050 | 4.620 | | 0.620 | 1.000 | 1.090 | 0.440 | 1.880 | 1.690 | 4 | 0.750 | 3.250 | 1.29 |
| | 26.70 | 117.3 | | 15.70 | 25.40 | 27.70 | 11.10 | 47.70 | 42.90 | | 19.10 | 82.50 | |
| 1 | 1.315 | 4.880 | | 0.690 | 1.060 | 1.360 | 0.500 | 2.120 | 2.000 | 4 | 0.750 | 3.500 | 1.55 |
| | 33.40 | 123.9 | | 17.50 | 26.90 | 34.50 | 12.70 | 53.80 | 50.80 | | 19.10 | 88.90 | |
| 1 1/4 | 1.660 | 5.250 | | 0.810 | 1.120 | 1.700 | 0.560 | 2.500 | 2.500 | 4 | 0.750 | 3.880 | 2.06 |
| | 42.20 | 133.3 | | 20.60 | 28.40 | 43.20 | 14.20 | 63.50 | 63.50 | | 19.10 | 98.60 | |
| 1 1/2 | 1.900 | 6.120 | | 0.880 | 1.250 | 1.950 | 0.620 | 2.750 | 2.880 | 4 | 0.880 | 4.500 | 3.00 |
| | 48.30 | 155.4 | | 22.30 | 31.75 | 49.50 | 15.70 | 69.85 | 73.15 | | 22.30 | 114.3 | |
| 2 | 2.375 | 6.500 | | 1.000 | 1.440 | 2.440 | 0.690 | 3.310 | 3.620 | 8 | 0.750 | 5.000 | 3.67 |
| | 60.30 | 165.1 | | 25.40 | 36.60 | 62.00 | 17.50 | 84.00 | 91.90 | | 19.10 | 127.0 | |
| 2 1/2 | 2.875 | 7.500 | 1.120 | 1.620 | 2.940 | 0.750 | 3.940 | 4.120 | 8 | 0.880 | 5.880 | 5.35 | |
| | 73.00 | 190.5 | 28.40 | 41.10 | 74.70 | 19.00 | 100.0 | 104.6 | | 22.30 | 149.3 | | |
| 3 | 3.500 | 8.250 | 1.250 | 1.810 | 3.570 | 0.810 | 4.620 | 5.000 | 8 | 0.880 | 6.620 | 7.06 | |
| | 88.90 | 209.5 | 31.75 | 46.00 | 90.70 | 20.60 | 117.3 | 127.0 | | 22.30 | 168.1 | | |

Class 1500 lb

| Pipe | | Flange | | | | | | Hub | Raised Face | Drilling Data | | | Weight |
|-------------------|------------------|------------------|----------------------------------|----------------------|----------------|-----------------|-----------------|--------------|---------------|---------------|--------------------|-----------------------------|-----------|
| Nominal Pipe Size | | A | B | C | D | E | K | F | G | H | I | J | |
| | Outside Diameter | Overall Diameter | Inside Diameter | Flange Thickness min | Overall Length | Socket Diameter | Depth of Socket | Hub Diameter | Face Diameter | No. of Holes | Bolt Hole Diameter | Diameter of Circle of Holes | kg/ piece |
| | in mm | in mm | in mm | in mm | in mm | in mm | in mm | in mm | in mm | | in mm | in mm | |
| 1/2 | 0.840 | 4.750 | To be specified by the Purchaser | 0.880 | 1.250 | 0.880 | 0.380 | 1.500 | 1.380 | 4 | 0.880 | 3.250 | 1.80 |
| | 21.30 | 120.6 | | 22.30 | 31.70 | 22.40 | 9.600 | 38.10 | 35.10 | | 22.30 | 82.50 | |
| 3/4 | 1.050 | 5.120 | | 1.000 | 1.380 | 1.090 | 0.440 | 1.750 | 1.690 | 4 | 0.880 | 3.500 | 2.41 |
| | 26.70 | 130.0 | | 25.40 | 35.00 | 27.70 | 11.10 | 44.40 | 42.90 | | 22.30 | 88.90 | |
| 1 | 1.315 | 5.880 | | 1.120 | 1.620 | 1.360 | 0.500 | 2.060 | 2.000 | 4 | 1.000 | 4.000 | 3.55 |
| | 33.40 | 149.3 | | 28.40 | 41.10 | 34.50 | 12.70 | 52.30 | 50.80 | | 25.40 | 101.6 | |
| 1 1/4 | 1.660 | 6.250 | | 1.120 | 1.620 | 1.700 | 0.560 | 2.500 | 2.500 | 4 | 1.000 | 4.380 | 4.02 |
| | 42.20 | 158.7 | | 28.40 | 41.10 | 43.20 | 14.20 | 63.50 | 63.50 | | 25.40 | 111.2 | |
| 1 1/2 | 1.900 | 7.000 | | 1.250 | 1.750 | 1.950 | 0.620 | 2.750 | 2.880 | 4 | 1.120 | 4.880 | 5.45 |
| | 48.30 | 177.8 | | 31.75 | 44.50 | 49.50 | 15.70 | 69.85 | 73.15 | | 28.40 | 123.9 | |
| 2 | 2.375 | 8.500 | | 1.500 | 2.250 | 2.440 | 0.690 | 3.310 | 3.620 | 8 | 1.000 | 6.500 | 10.2 |
| | 60.30 | 215.9 | | 38.10 | 57.15 | 62.00 | 17.50 | 104.6 | 91.90 | | 25.40 | 165.1 | |
| 2 1/2 | 2.875 | 9.620 | 1.620 | 2.500 | 2.940 | 0.750 | 3.940 | 4.120 | 8 | 1.120 | 7.500 | 13.9 | |
| | 73.00 | 244.3 | 41.10 | 63.50 | 74.70 | 19.00 | 123.9 | 104.6 | | 28.40 | 190.5 | | |

Notes

- Class 400 socket weld flanges may be provided in NPS 1/2 to 2 1/2 using Class 600 dimensions
- Dimension B corresponds to the pipe inside diameter. Values quoted assume 40S/Standard wall thickness.
- Weights are based on manufacturer's data and are approximate.
- For ring joint facings see page 8-6. For tolerances see page 8-4.